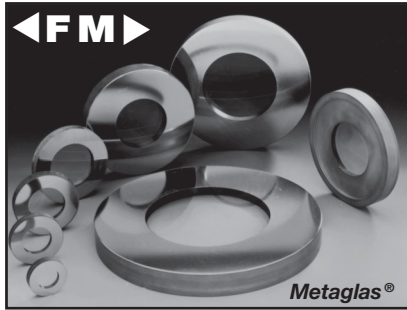


Process Observation Equipment

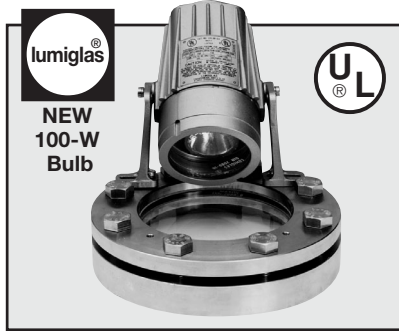
Premium Specs ★ Innovative Designs ★ Value Priced ★ Large in-Stock Inventory

ISO 9001
DATA SHEET 02-0020 08/04



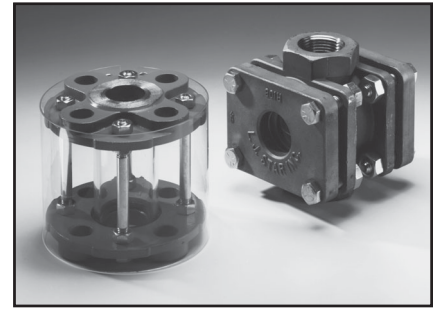
"Super" Glass Windows For Sight Flows and Viewports

A fusion of stainless steel and borosilicate glass, Metaglas® windows provide safety and long life in the most challenging applications. And they are easily removed for cleaning without danger of reinstallation stress failure.



Explosion-Proof UL 844 Luminaire For Hazardous Use

"No Quibbling" explosion-proof UL listed design provides up to 100-W of high-intensity glare-free illumination for sight flow indicators, sight ports or for specific-area lighting. Lumiglas products are manufactured to ISO9001 standards.



L.J. Star Visual Flow Indicators Are "Simply Better"

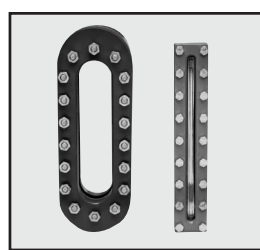
Choose from a full range of view-through or full, 360° view models, flanged or threaded with stainless or coated-carbon steel investment cast bodies. Options include sanitary, lined, corrosion-resistant and Factory Mutual approved designs.



Circular Sight Glass Assembly with weld flange, ready to install. Standard rating to 235 psi at 572°F. Custom designs available.



Lumiglas® Sanitary Light Port with MetaClamp® connection available from 1/2". These compact units provide up to 100 watts of light.



Welded Obround & Rectangular Sight Glasses in standard or custom sizes and in carbon steel, stainless or special alloys.



Lumiglas® LED Light with 11 years maintenance-free operating life, is impact & vibration resistant and produces no heat inside vessel.



Combined Light/sight Port with central wiper and Lumistar luminaire for added visibility. Rated up to 85 psi.



MetaClamp® 3-A sanitary-clamp windows meet sanitary standards at high pressure and extreme temperatures, safely.



Metaglas® Hinged Sight Window provides quick-opening access for sampling or cleaning, welded or bolt-on, rated up to 150 psi.



Circular Bolt-On Sight Glass Assembly is ready for installation on existing ANSI or DIN standard flanges, 2 to 8-in.



MagneStar™ Magnetic Liquid Level Gages provide safe, non-intrusive, direct or remote reading, level indication.

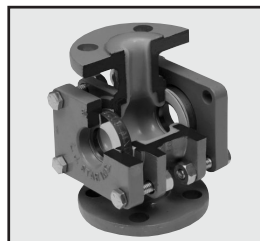


A complete line of Hygienic Clamps for the pharmaceutical and biotech industries. Unique features include all 316 S.S. and full ASME code.

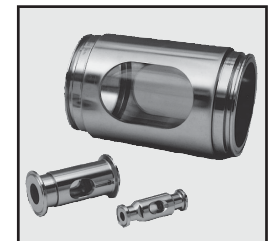
Illuminated Weld-on Sight/Light Port for easy opening and cleaning plus excellent visibility. Also available with 4" sanitary clamp connection.



Lined View-Thru Visual Flow Indicators handle a wide variety of corrosive chemicals; are offered in sizes from 1 to 8 inches.



Sterile Visual Flow Indicator, equipped with 3-A approved clamp connections and USP Class VI o-ring seals. Full view style also available.



"Where quality in design, engineering, materials and workmanship is always a standard feature."

Custom designs are available for special applications.

LJSTAR
INCORPORATED

P.O. Box 1116
Twinsburg, OH 44087
Applications Engineering Department:
(330) 405-3040 • Fax: (330) 405-3070
E-mail: view@ljstar.com
Website: www.ljstar.com