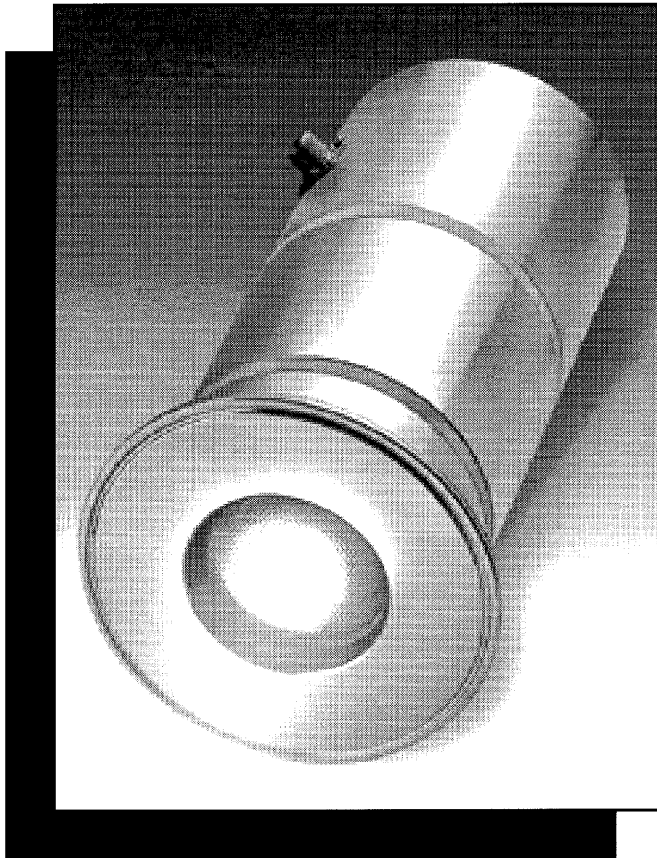


High-Intensity Luminaire Illuminates Interiors of Large Sanitary Vessels

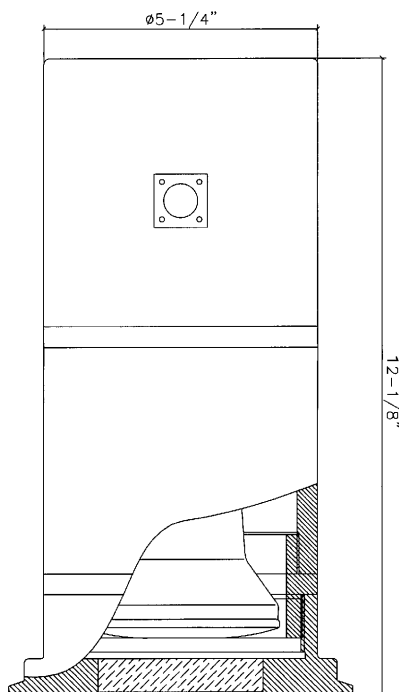
Data Sheet 02-0235
01/06



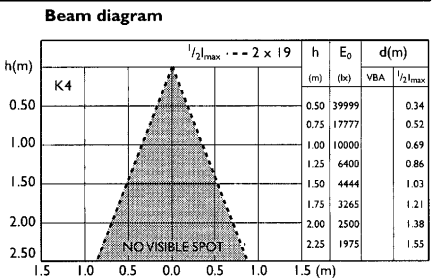
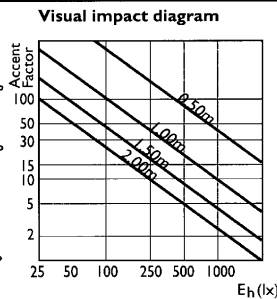
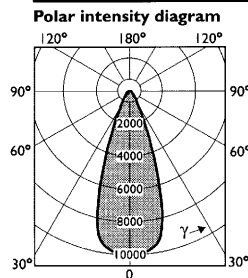
Large pressurized tanks, pipelines, mixers and other sanitary vessels are brightly illuminated by the new ESL-39 luminaire from L.J. Star Inc. The use of a High Intensity Discharge (HID) bulb provides an equivalent of 300 watts of intense halogen light through a Metaglas® MetaClamp® safety glass lens. Used on 6" and greater sanitary ferrules, these powerful luminaires mount directly onto virtually any vessel.

Designed for continuous use, these lights generate very little heat and last up to 10,000 hours (over 1 year) on one bulb. The unit is available with a 40 degree beam angle for illumination of specific areas or a 70 degree wide angle to uniformly illuminate the entire vessel. Overall dimensions are 12-1/8" long by 5-1/4" diameter.

This unique design incorporates the proven MetaClamp sanitary mounting system, with its fused borosilicate safety glass lens, into a single compact illumination unit. The ESL-39 is equally well adapted to illuminating the interior of new or existing sanitary processing equipment. The MetaClamp is BPE compliant and USP Class VI tested to confirm biocompatibility. An optional mounting bracket can be used to mount the ESL-39 onto existing sight ports.



PAR 30L/070 40D



L.J. STAR
INCORPORATED

L. J. STAR Incorporated • P.O. Box 1116 • Twinsburg, OH 44087
Phone: (330) 405-3040 • Fax: (330) 405-3070
Website: www.ljstar.com • E-mail: view@ljstar.com