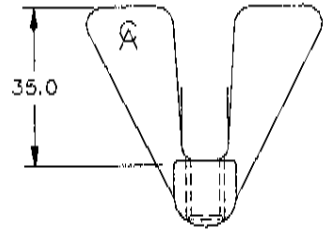


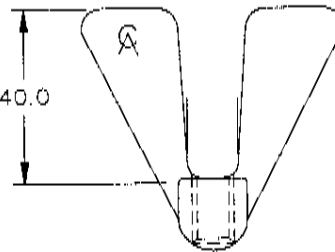
WINGNUT 5/16" UNC 25mm (NEW)

Sage Code NW5S-5/16-025D
Drawing Number 0055/C
Clamp Type Used S TYPE
Material STAINLESS STEEL
Quantity 0



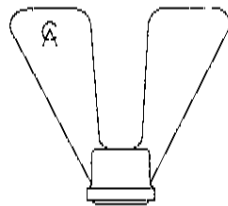
WINGNUT 5/16" UNC 35mm (NEW)

Sage Code NWS-5/16-035D
Drawing Number 0067/B
Clamp Type Used S TYPE
Material STAINLESS STEEL
Quantity 0



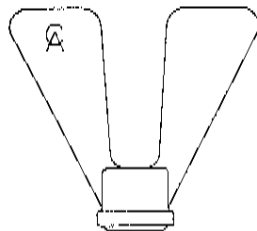
WINGNUT M10 40mm

Sage Code NWS-M10-040D
Drawing Number
Clamp Type Used SH TYPE
Material STAINLESS STEEL
Quantity 0



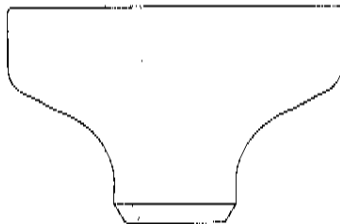
WINGNUT 5/16" UNC 25mm (OLD)

Sage Code NW5-5/16-025B
Drawing Number ADV34A14
Clamp Type Used S & SH <2"
Material STAINLESS STEEL
Quantity 0



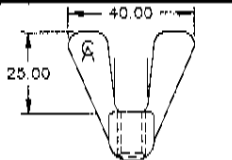
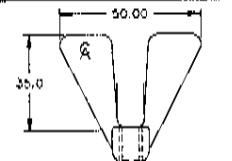
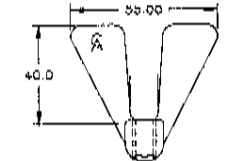
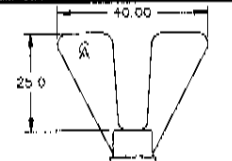
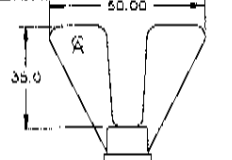
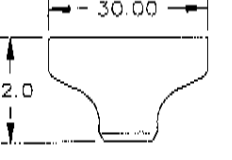
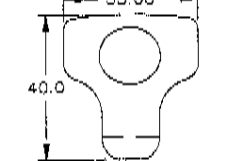
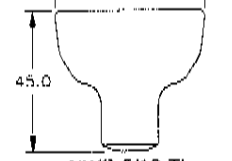
WINGNUT 5/16" UNC 35mm (NEW)

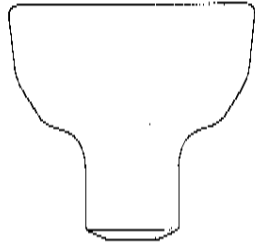
Sage Code NW5-5/16-035B
Drawing Number ADV34A13
Clamp Type Used S & SH >2"
Material STAINLESS STEEL
Quantity 0



WINGNUT 5/16" UNC SMALL T TYPE

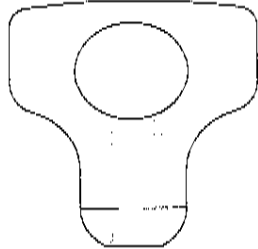
Sage Code NW5-5/16-T5
Drawing Number 0224/A
Clamp Type Used T TYPE CLAMP
Material STAINLESS STEEL
Quantity 0

DIMENSIONS - CODE	S 1/2" - 1"	S 2" - 4"	SH 1/2" - 1"	SH 2" - 5"	SH 5 1/2"-12"
 <p>NWS-5/16-025D</p>	✓		✓		
 <p>NWS-5/16-035D</p>		✓		✓	
 <p>NWS-M10-040D</p>					✓
 <p>NWS-5/16-025B</p>	✓		✓		
 <p>NWS-5/16-035B</p>		✓		✓	
 <p>NWS-5/16-T5</p>	✓		✓		
 <p>NWS-5/16-P</p>	✓	✓		✓	
 <p>NWS-5/16-TL</p>					✓



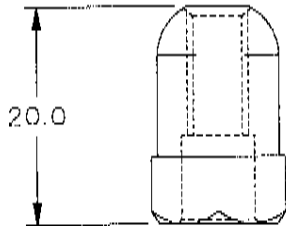
WINGNUT 5/16" UNC LARGE T TYPE

Sage Code NWS-5/16-TL
 Drawing Number 0223/A
 Clamp Type Used T TYPE CLAMP
 Material STAINLESS STEEL
 Quantity 0



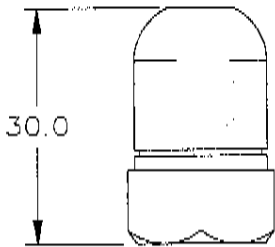
WINGNUT 5/16" UNC P TYPE

Sage Code NWS-5/16-P
 Drawing Number 0099/A
 Clamp Type Used P TYPE CLAMP
 Material STAINLESS STEEL
 Quantity 0



DOME NUT 5/16" UNC SMALL

Sage Code NDS-5/16-020-S
 Drawing Number 1170/A
 Clamp Type Used >1/2" <4 1/2"
 Material STAINLESS STEEL
 Quantity 0



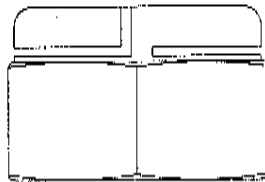
DOME NUT M10 LARGE

Sage Code NDS-M10-030-L
 Drawing Number 1161/D
 Clamp Type Used >5"
 Material STAINLESS STEEL
 Quantity 0



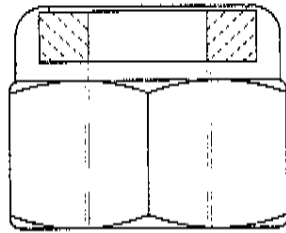
AERO TIGHT 5/16"UNC

Sage Code NAS-5/16
 Drawing Number
 Clamp Type Used <5"
 Material STAINLESS STEEL
 Quantity 0



AERO TIGHT M8

Sage Code NAS-M8
 Drawing Number
 Clamp Type Used <5"
 Material STAINLESS STEEL
 Quantity 0



NYLOC 5/16"UNC

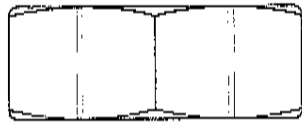
Sage Code NNS-5/16
 Drawing Number
 Clamp Type Used <5"
 Material STAINLESS STEEL
 Quantity 0

HEX NUT M10



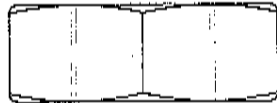
Sage Code NHS-M10
 Drawing Number
 Clamp Type Used <6"SSH
 Material STAINLESS STEEL
 Quantity 0

HEX NUT M12



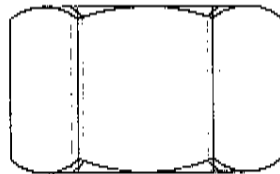
Sage Code NH5-M12
 Drawing Number
 Clamp Type Used >6"SSH
 Material STAINLESS STEEL
 Quantity 0

HEX NUT M10



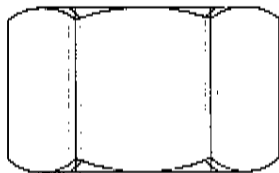
Sage Code NHB-M10
 Drawing Number
 Clamp Type Used <6"SSH
 Material Brass
 Quantity 0

DEEP NUT 3/8" UNC

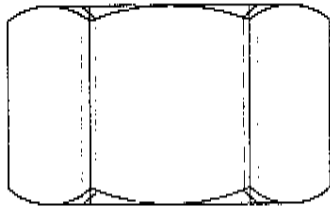


Sage Code NDS-3/8
 Drawing Number 4229/A
 Clamp Type Used
 Material Stainless Steel
 Quantity 0

DEEP NUT 3/8" UNC

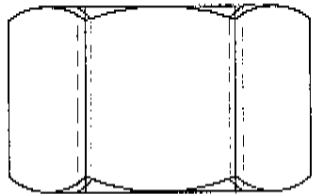


Sage Code NDB-3/8
 Drawing Number ADVBRXN38
 Clamp Type Used
 Material Brass
 Quantity 0



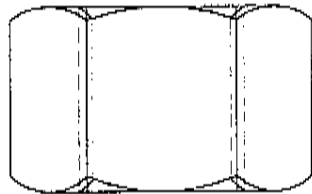
DEEP NUT 1/2" UNC

Sage Code NDS-1/2
 Drawing Number
 Clamp Type Used
 Material Stainless Steel
 Quantity 0



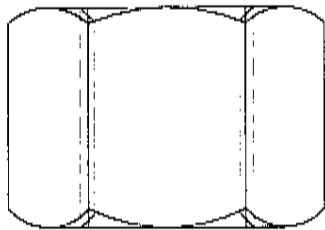
DEEP NUT M10

Sage Code NDS-M10
 Drawing Number 4154
 Clamp Type Used <6" SSH
 Material Stainless Steel
 Quantity 0



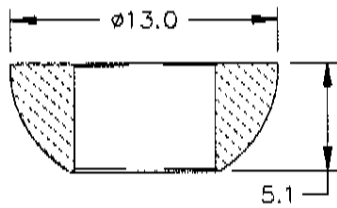
DEEP NUT M10

Sage Code NDB-M10
 Drawing Number
 Clamp Type Used <6" SSH
 Material Brass
 Quantity 0



DEEP NUT M12

Sage Code NDS-M12
 Drawing Number 4155
 Clamp Type Used >6" SSH
 Material Stainless Steel
 Quantity 0



DOMED SPACER WASHER

Sage Code NSW-5/16
 Drawing Number 258
 Clamp Type Used <5" S/SH
 Material Stainless Steel
 Quantity 0