

## Spray Unit

- for circular sightglasses to Model DIN 28120 or similar -

ISO 9001

DATA SHEET 02-0100 08/02

### Application:

For intermittent, continuous or automatically controlled pressure cleaning of the underface of a sightglass disc. Suitable for pressure and vacuum vessels subject to hydraulic test certification for all standard ratings and use in explosion hazardous zones as well as non hazardous zones.

### Fitting:

By means of screwed ends, through clearance hole in cover flange into sightglass weld flange to form pressure tight seal.

### Operating Parameters:

Corresponds to sightglass fitting rating

### Combination with other features:

Can be used with Lumiglas wiper systems and luminaires.

Caution: The maximum permissible operating temperature and the resistance to temperature shock for the relevant glass used must be considered.

### Materials:

All metallic product contact parts are of stainless steel 316 grade equivalent.

### Mounting:

The unit comprises Spray Jet Head, Lock Nut, 2 Seals, Connecting Nozzle 10 mm O.D. x 5 mm bore with hexagon shank and Fitting Instructions.

When supplied as part of a complete sightglass assembly, the sightglass flanges come drilled and tapped from the factory, ready to install the unit.

Depending on the operating conditions, allowance should be made for a suitable check valve on the wash feed line.

### Mounting diagram

- Item 1 Connecting nozzle; passes through clearance hole in cover flanges and screws downwards into base/weld flange (pad).
- Item 2 Seals
- Item 3 Lock nut
- Item 4 Spray head; screws upwards into underside of weld flange

### Dimensions

The spray unit fits all sizes of sightglasses. Depending on the application the sightglass may need two or more spray units.

### Ordering Information:

Lumiglas Spray Unit, N° 1.1098.005.91

If ordering in combination with a sightglass fitting, please always state the sightglass type:

1. sightglass fitting (DN/PN), materials
2. dimensions and type of sightglass disc (borosilicate, soda lime glass)

If ordering as separate item, always state operating parameters as well as details of flange/glass materials and dimensions.

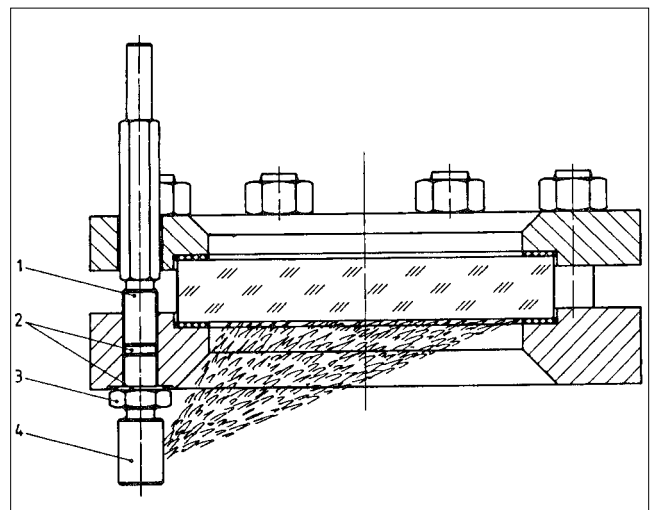
ISO 9001 QA CERTIFICATE  
GERMAN MANUFACTURER:

F.H. PAPANMEIER AWARDED QA APPROVAL CERTIFICATE



Spray unit and feed nozzle designed for sightglass flanges to DIN 28120.

All dimensions in mm unless stated otherwise.  
Subject to change without prior notice



Cross sectional drawing of sightglass assembly with spray unit in operation.